



NEW RELEASE - URBANO 9.4

List of new features and resolved problems



General information

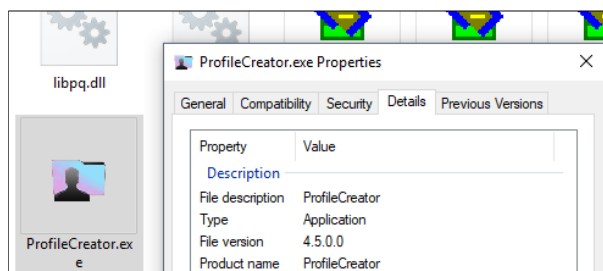
Urbano 9.4 supports newest CAD platform 2020, which means it supports following CAD platforms:

- **AutoCAD / Civil3D / MAP3D 2020 64-bit**
- AutoCAD / Civil3D / MAP3D 2019 64-bit
- AutoCAD / Civil3D / MAP3D 2018 64-bit
- AutoCAD / Civil3D / MAP3D 2017 64-bit
- AutoCAD / Civil3D / MAP3D 2016 64-bit
- AutoCAD / Civil3D / MAP3D 2015 64-bit

1 New features

1.1 Profile Creator

Urbano 9.4 works with new Profile Creator, that supports .NET Framework 4.5., has new icon and is versioned as 4.5.0.0.



1.2 Canalis

1. Edit system type – New selection has been added: From node to node (LS). LS means “Longitudinal section”.
2. Export to SWMM (INP file) – non-circular pipe shapes supported (elliptic, egg-formed, inverted egg-formed, arch, rectangular, rectangular with curved bottom).

1.3 Assembly schemes

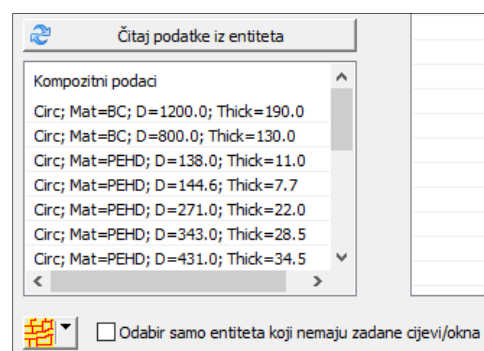
1. New layers have been added in system Assembly schemes. In total, there are 11 new layers. Each component from the scheme will be placed on its own layer.
2. New selection option for elements (block and parametric) has been added in all relevant functions (Editing elements, Editing labels and positions, interactive labeling). New selection marks elements instead of their extent frames. It also searches for the closest line of another element, instead for the closest extent frame.
3. Assembly schemes system template has been updated with new layers and configurations.
4. Manhole top view – it is possible to show only pipe axes, without pipes (it can be shown both, too).



1.4 BIM

1.4.1 Bind data with pipes/manholes

1. New data has been added – for pipes, pipe wall thickness, L (length) and W (width) for rectangular manholes. Besides that, composite data structure has been improved to make the usage easier.



1.4.2 Terraform – Trench grading

1. Function has been significantly improved in speed and performances.

2 Repaired problems

2.1 Hydra

1. When running hydraulic calculation of exporting network to INP file, program shows an error and shuts down unexpectedly if water tank data has not been defined (initial water level, min/max water level). The problem emerges in case water tank was defined by Node editing function, instead by using “Set hydraulic equipment” function in Hydra. **Repaired.**
2. If there is no data about terrain / pipe invert elevations and pipe diameters, program doesn't store any information in INP file. If there is data about terrain elevations, only nodes are stored in INP file. **Repaired.**
3. If valve or pump is assigned to node through the function Node editing, program assigns them without parameters. When exported to INP file, valve /pump is missing in the network. **Repaired.**
4. Hydraulic calculation – if valve parameters are missing (pressure, flow, loss coefficient), program shows it as a warning, instead error, although those parameters are mandatory. **Repaired.**

2.2 Canalis

1. Export to SWMM (INP file) – non-circular pipe shapes stored in INP file as circular. **Repaired.**

2.3 Assembly schemes

5. Assembly schemes manager – When selecting one schema and moving it, then selecting another schema (or more) from the list – move – program closes unexpectedly. **Repaired.**
6. Editing - Move elements. By pressing ESC, program erases element instead taking no action. **Repaired.**
7. Data Length [m] in Bill of material is not shown in meters, but in millimeters. **Repaired.** Now the data name is Length [mm].



2.4 System functions

2.4.1 Branch editing

1. Merging branches was not allowed in case when subsystem elements (i.e. house connections) were connected to one of those branches. **Problem has been repaired.** Merging branches will be possible even in those cases, by using options **merge** and **merge from node to node**.

2.4.2 Array editing

1. Unlike renaming nodes, sections and branches, renaming arrays doesn't propose existing array's name, but some default name. **Problem has been repaired.** Now the program will propose existing name, while the user can set some prefix/suffix, or enter certain change.

2.4.3 Saved selection sets

1. When adding/removing selection set to/from existing selection set program shows an error and shuts down unexpectedly. **Problem has been repaired.**

2.4.4 Reset data

1. Search box – When typing text in search box, focus is lost after each letter. User must click in the box repeatedly. **Repaired.**

2.5 Insert data

2.5.1 Upper layers and protecting pipes

1. When inserting data for upper layers and/or protection pipes on multiple (unconnected) sections at once, program shows an error and doesn't save the data. If array/branch/from node to node selection option is used, everything works properly. Error is related to sorting. **Repaired.**
2. When erasing upper layers and/or protection pipes), program shows an error: Selected items do not exist on certain sections! **Repaired.**
3. Protector pipe label in plan is moved from original layer to the layer of the currently active system after opening User data function. **Repaired.**
4. When protector pipe is defined for the entire system at once, label in plan does not look right. **Repaired.**
5. Additional data is corrupted. Erase? – This message pops up when new node is inserted on section with additional network data and/or protection pipe. **Repaired.**

2.6 Automatic invert definition

1. Automatic invert calculation – in case that pipe diameters were assigned previously, program doesn't give proper solution for nodes where pipe diameter changes. Pipes are placed lower (to place pipe top within minimal depth), but minimal manhole drop condition is not considered. **Repaired.**
2. Default parameters for min/max depth and min/max manhole drop were changed.



2.7 Reports

1. If module Polygon is not licensed, report for manholes can not be generated. Program shows message: "Module license is missing". **Repaired.**

2.8 Longitudinal sections (profiles)

1. Component: Decorations, category: Label shifting (above referent terrain), parameter: Connection line color – does not work. Regardless of the color selected, program always shows this line in red color. **Repaired.** To activate this option, edit LS configuration and click OK.

2.9 Labels

1. Station label – node name in circle was not centered properly. If the user changes text height, text is not placed in circle any more. **Repaired.**

2.10 Intersection analysis

1. Groups of CAD elements – If CAD element that intersects system was defined as 2DPOLYLINE, program doesn't show intersection point in profile. **Repaired.**

2.11 BIM and 3D

2.11.1 Draw trench border and Trench grading (Terraform)

2. **Tools – Draw trench border.** In case of circular network (ring in water system), program didn't draw bottom trench border properly. **Repaired.**
3. **Terraform – Trench grading** – as a result of previously listed problem, trench grading wasn't correct for circular network. **Repaired.**

2.11.2 3D Style and IFC / Navisworks export

1. Rectangular manhole – Circular open – Angular – not shown properly in 3D style, IFC and NWC (Navisworks) format. **Repaired.**
2. Arch pipes – not shown properly in IFC and NWC format. **Repaired.**
3. For some pipe types (rectangular with cunette, elliptical, egg-formed and egg-formed inverted), program exported internal dimensions instead of external (IFC, NWC).

2.11.3 Import from LandXML

1. Import DTM surface from LandXML – program doesn't refresh TerraForm panel. **Repaired.**
2. Import from LandXML (created by Civil3D)– data SUMP DEPTH was not imported in Urbano. Urbano handles manholes with multiple parameters, that is why it wasn't available. **Repaired.** Now Urbano will interpret SUMP DEPTH as ABSOLUTE ELEVATION OF MANHOLE BOTTOM.



2.12 System intersection with polygons

1. Editing – Additional network data – Poly intersection – program doesn't show correct values of system length within certain polygon when re-selecting. **Repaired.**

2.13 Polygons

1. System Polygon – delete takes a lot of time. **Repaired-**
2. Tools - Buffer / Union / Intersection – Function offers option to create it as a polygon of a new system. Program sets this system as active, but it doesn't refresh Workspace. After selecting table configuration, program closes unexpectedly. **Repaired.**

2.14 Turkish extension

1. ISKI Excel link:
 - a. Yagmursuyu export (Storm system): column AN (Kesit Doluluk Kontrol) formula has been changed to check values in column AE (h/D, filling percent), instead of values in column AC (Q/Qo – flow percent).
 - b. Yagmursuyu export (Storm sytem): column AM was hidden, as well as all columns on the right from the column AS.
 - c. Atiksu export (Sanitary system): column AU (Kesit Doluluk Kontrol) formula has been changed to check values in column AP (Der. Oranı), instead in column AN (Debi Oranı).
 - d. Atiksu export (Sanitary system): all columns on the right from column AW were hidden, as well as columns G, H, J, K, O, P.
 - e. Yagmursuyu and Atiksu XLSX templates were updated.
2. **CountryKit.xml** file that contains configurations for for Turkish version has been updated.
3. File **IskilTPCfg.xml** that contains data about rain runoff for Istanbul stations has been updated with new values.